

MPS Platform System

The modular mps+ platform enables detailed analysis of the steps and direction of the subject's gait cycle. the first module has all the features of the epsr2 model and can be used individually to perform postural, orthostatic and dynamic analysis of the single support.

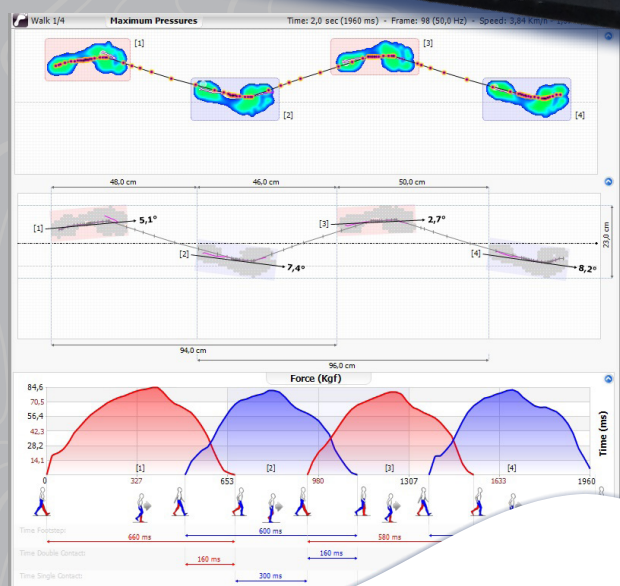
The mps+ footplate is the best solution for the professional who wants to evaluate the plantar pressures combined with the times-space parametres of gait analysis. it can be used in configuration from 1 to 16 meters long (from 1 to 32 modules).

You can see the footage of the steps and compare the different steps performed by the subject, to obtain statistical and comparative reports on the tests performed.

The results of the analysis can be viewed on the pc using the software biomech studio.



THICKNESS	5 mm
WEIGHT	6 kg/modulo
MATERIAL BASE	Aluminum
WIDTH AND SIZE	50 x 70 cm
TYPE OF SENSOR	Resistive
N. SENSOR X MODULE	2304 (48x48)
PRESSURE	10 - 500 Kpa
FREQUENCY	50 - 100 Hz
CONNECTION	USB
POWER SUPPLY	Charging 3.7 V
MODULES	Up to 32 modules
ACTIVE AREA	From 1mt to 16mt



Tactilus®

SPI SENSOR PRODUCTS INTL.
TACTILE PRESSURE EXPERTS

www.sensorprod.com
email: sales@sensorprod.eu

ITALY HEADQUARTERS
Via Bruno Buozzi 25 - Castel Maggiore 40013 (BO) Italy
tel. +39 051 045 1857

USA OFFICE
300, Madison Ave - Madison NJ 07940 - USA